

SMPTE RECOMMENDED PRACTICE

Dimensions of 35- and 70-mm Motion-Picture Rewind Spindles



Page 1 of 2 pages

1 Scope

This practice specifies the dimensions of 5/16-in and 1/2-in spindles for both 35-mm and 70-mm motion-picture rewinds.

2 Dimensions

The dimensions shall be as given in figures 1 and 2 and table 1.

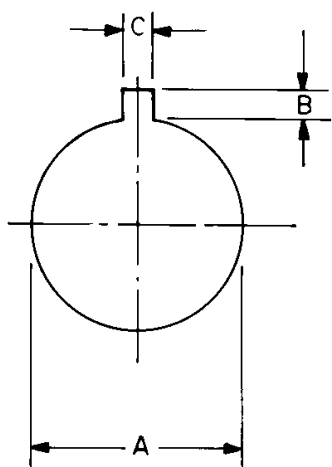


Figure 1 – 5/16-in spindle

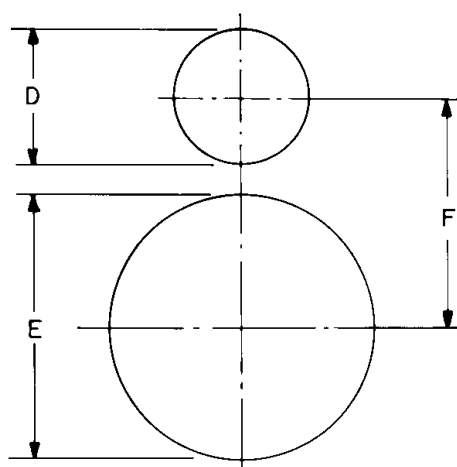


Figure 2 – 1/2-in spindle

Table 1 – Dimensions

Dimensions	Inches	Millimeters
A	0.315 + 0.000 – 0.005	8.00 + 0.00 – 0.13
B	0.120 ± 0.010	3.05 ± 0.25
C	0.120 ± 0.010	3.05 ± 0.25
D	0.250 ± 0.010	6.35 ± 0.25
E	0.500 + 0.000 – 0.008	12.70 + 0.00 – 0.20
F	0.782 ± 0.010	19.86 ± 0.25

Annex A (informative)

Bibliography

Projection reels:

ANSI/AIIM MS34-1990, Dimensions for Reels Used for 16-mm and 35-mm Microfilm

ANSI/SMPTE 235-1998 (R2003), Motion-Picture Equipment (16-mm) — Projection Reels — 200- to 2300-Ft Capacity

ANSI/SMPTE 241-1995, Motion-Picture Equipment — 35-and 70-mm Projection Reels

Shipping reels:

ANSI/SMPTE 192-1997 (R2003), Motion-Picture Equipment (35-mm) — Shipping Reels for Prints