

SMPTE RECOMMENDED PRACTICE

RP 124-1998

Revision of RP 124-1993

Insertion Pivot for Studio Lighting Units and Mating Holders for Use with Standing and Hanging Support Systems



Page 1 of 2 pages

Purpose

The Professional Motion Picture Equipment Association (PMPEA) determined in 1978 that a committee should be formed to investigate the need for standardization of studio lighting hardware. In cooperative efforts, the Society of Motion Picture and Television Engineers joined with the PMPEA to form the Working Group for Studio Lighting Hardware Standardization. Initial investigations began with the lighting pin. The premise for such an investigation was to provide a universal nomenclature and proper adaptability of the pin size.

1 Scope

This practice specifies the dimensions for an insertion pivot used for mounting studio lighting units on standing or hanging support devices, the mating holders for the insertion pivot, and the mating devices for holding or hanging stage lighting devices weighing less than 22 lbs (10 kg).

2 Dimensions

The dimensions shall be as specified in the figures and tables.

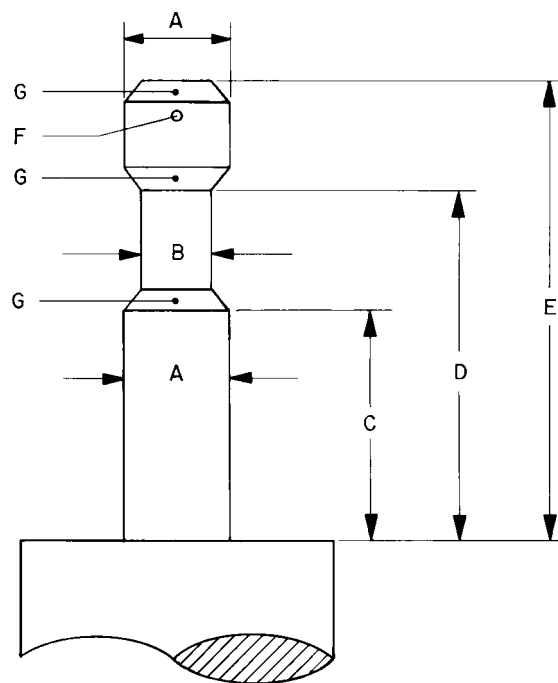


Figure 1 – Insertion pivot (baby pin)

Table 1 – Specifications

Dimensions	Inches	Millimeters
A	0.625 + 0.002 – 0.003	15.88 + 0.05 – 0.08
B	0.50 ± 0.01	12.7 ± 0.3
C	1.50 ± 0.01	38.1 ± 0.3
D	2.44 ± 0.01	62.0 ± 0.3
E	2.50 ± 0.01	63.5 ± 0.3
F (#30 drill)	0.128 nom	3.25 nom
G (chamfer)	45° × 0.06 nom	45° × 1.5 nom

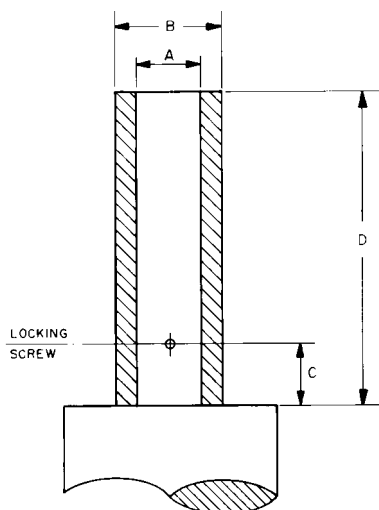


Figure 2 – Stand mount for baby units

Table 2 – Specifications

Dimensions	Inches	Millimeters
A	0.635 $\begin{smallmatrix} + 0.010 \\ - 0 \end{smallmatrix}$	16.13 $\begin{smallmatrix} + 0.25 \\ - 0 \end{smallmatrix}$
B	0.75 min	19.0 min
C	0.87 ± 0.01	22.1 ± 0.03
D	2.63 ± 0.01	66.8 ± 0.03

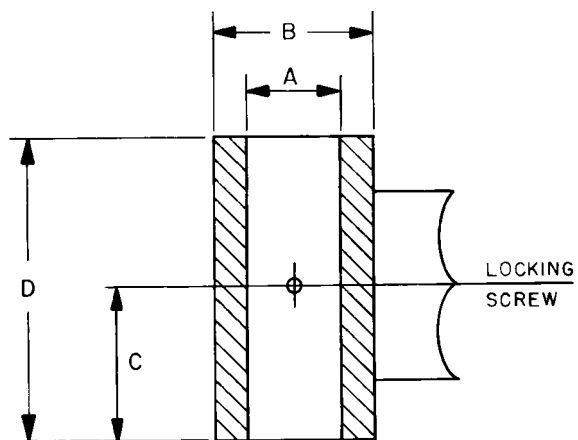


Figure 3 – Hanger mount for baby units

Table 3 – Specifications

Dimensions	Inches	Millimeters
A	0.635 $\begin{smallmatrix} + 0.010 \\ - 0 \end{smallmatrix}$	16.13 $\begin{smallmatrix} + 0.25 \\ - 0 \end{smallmatrix}$
B	0.75 min	19.0 min
C	0.63 ± 0.01	16.0 ± 0.3
D	1.25 ± 0.01	31.8 ± 0.3