

SMPTE OVERVIEW

SMPTE Bit-Serial Interfaces at 1.5 Gb/s – Roadmap for the 292 Document Suite



Page 1 of 3 pages

Document Roadmap

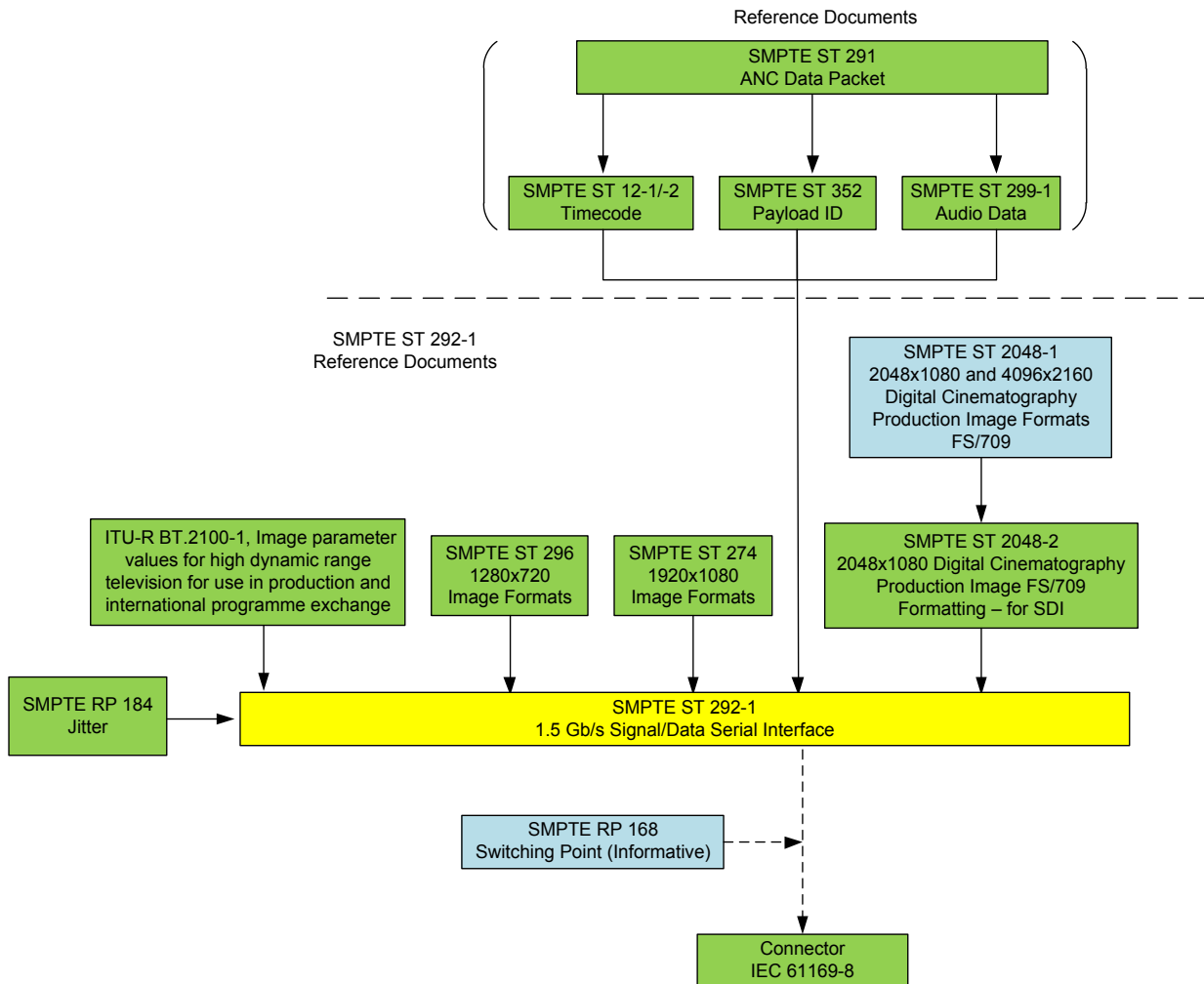
The SMPTE 292 suite of documents defines the mapping of various source image formats onto serial digital interfaces operating at a nominal rate of 1.5 Gb/s. This informative “roadmap” describes the documents in the 292 suite.

2 SMPTE ST 292-1

SMPTE ST 292-1 defines a bit-serial data structure and the coaxial cable interface specifications for 1.5 Gb/s [nominal] Signal/Data Serial Interface to carry either 1280×720, 1920×1080 or 2048×1080 active pixel formats mapped into the 1.5 Gb/s payload. This standard defines the method of serializing the parallel source format data to a serial bit stream. This interface may also carry packetized data mapped into the 1.5 Gb/s transport payload providing the constraints imposed by the reference source image formats are observed.

This standard specifies a coaxial cable interface suitable for application where the signal loss does not exceed an amount specified by the receiver manufacturer, typical loss amounts would be in the range of up to 20 dB at one-half the clock frequency.

2.1 SMPTE ST 292-1 Document Road Map



3 SMPTE ST 292-2

SMPTE ST 292-2 defines a means of transporting stereoscopic images (Left eye and Right eye images) using an interface consisting of two streams based on the SMPTE ST 292-1 data structure. The Left eye images are carried on one stream of the interface and the Right eye images are carried on the other stream. The stereoscopic image formats to be transported using this standard are the 4:2:2/10-bit image formats defined by SMPTE ST 274, SMPTE ST 2048-2 and SMPTE ST 296, which can be transported by a single SMPTE ST 292-1 serial interface. Audio and other associated ancillary data may also be transported. This standard also defines a payload identifier.

3.1 SMPTE ST 292-2 Document Road Map

