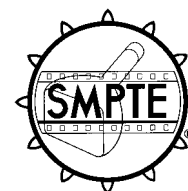


# SMPTE STANDARD

ANSI/SMPTE 192-1997

Revision of  
ANSI/SMPTE 192-1991

## for Motion-Picture Equipment (35-mm)— Shipping Reels for Prints



Page 1 of 2 pages

### 1 Scope

This standard specifies the dimensions of shipping reels for 35-mm motion-picture prints having a nominal film capacity of 2000 ft (610 m). The use of 1000-ft capacity shipping reels is not recommended for the reasons specified in annex A.1.

### 2 Dimensions

2.1 The dimensions shall be as given in figure 1 and table 1.

2.2 Dimension F defines the area over which the reel thickness, specified by dimension C<sub>2</sub>, applies.

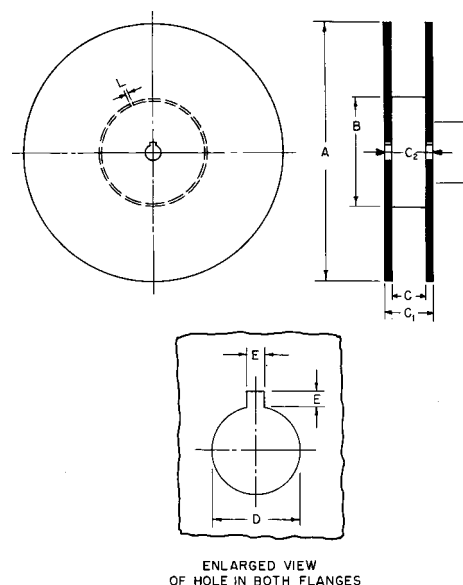


Figure 1 – Plan view and cross section of  
reel

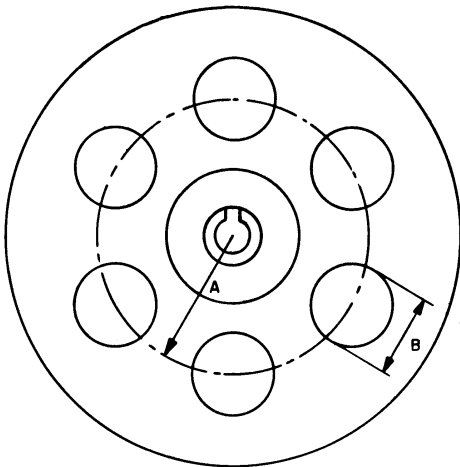
Table 1 – Reel dimensions

Dimensions	Inches	Millimeters
A	14.50 ± 0.03	368.3 ± 0.8
B	4.10 + 0.00 – 0.15	104.1 + 0.0 – 3.8
C	1.53 ± 0.03	38.9 ± 0.8
C <sub>1</sub>	1.885 ± 0.030	47.88 ± 0.76
C <sub>2</sub>	1.625 + 0.115 – 0.030	41.28 + 2.92 – 0.76
D	0.317 + 0.002 – 0.000	8.05 + 0.05 – 0.00
E	0.150 ± 0.010	3.81 ± 0.25
F	2.25 min	57.2 min
L	0.035 nom	0.89 nom

CAUTION NOTICE: This Standard may be revised or withdrawn at any time. The procedures of the Standard Developer require that action be taken to reaffirm, revise, or withdraw this standard no later than five years from the date of publication. Purchasers of standards may receive current information on all standards by calling or writing the Standard Developer. Printed in USA.

**Annex A** (informative)  
**Additional data**

**A.1** The use of shipping reels with small hubs (those resulting in a flange-to-hub ratio of 3:1 or greater) on projectors and rewind equipment already adjusted for reels with large hubs (flange-to-hub ratio of 3:1 or less) can subject film tension to drastic increases which may result in perforation damage by the sprocket.

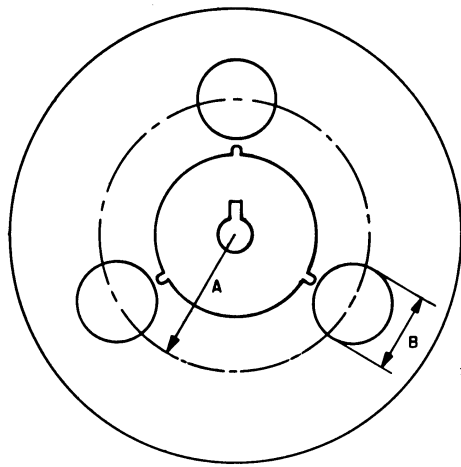


**Figure A.1 – 2000-ft steel reel hub**

**Table A.1 – Steel hub dimensions**

Dimensions	Inches	Millimeters
A	1.313 ± 0.002	33.35 ± 0.05
B	0.803 ± 0.002	20.40 ± 0.05

**A.2** Some auxiliary projection equipment, such as makeup tables for platters, have an adjustable noncentral spindle and a special hole may need to be placed in plastic and metal reels to accommodate the spindle. Figures A.1 and A.2 specify reels in current use. The use of plastic shipping reels is deprecated because they produce static electricity which attracts dust to the film surface.



**Figure A.2 – 2000-ft plastic reel hub**

**Table A.2 – Plastic hub dimensions**

Dimensions	Inches	Millimeters
A	1.379 ± 0.002	35.03 ± 0.05
B	0.805 ± 0.002	20.45 ± 0.05

**Annex B** (informative)  
**Bibliography**

ANSI/SMPTE 241-1995, Motion-Picture Equipment —  
35- and 70-mm Projection Reels